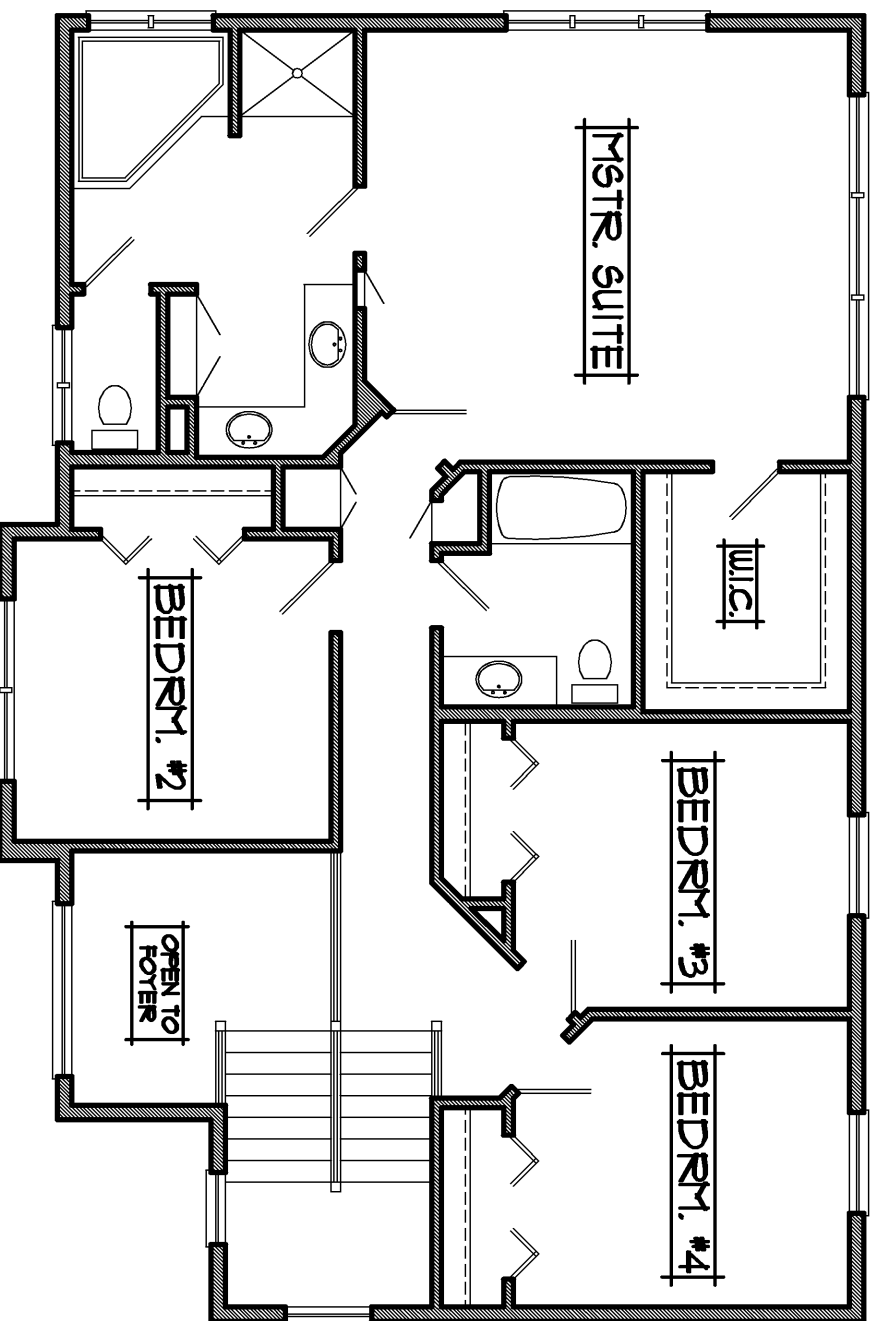
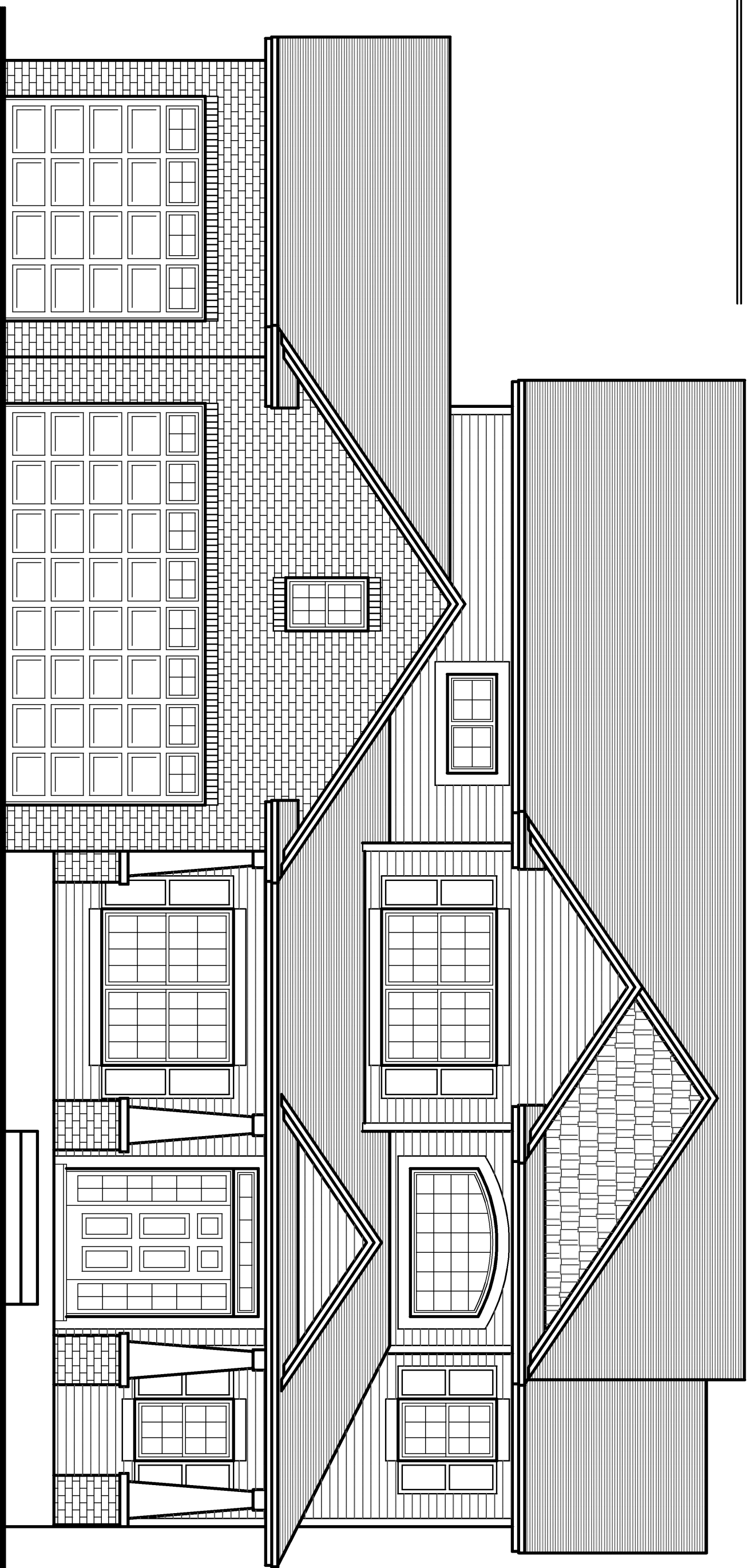
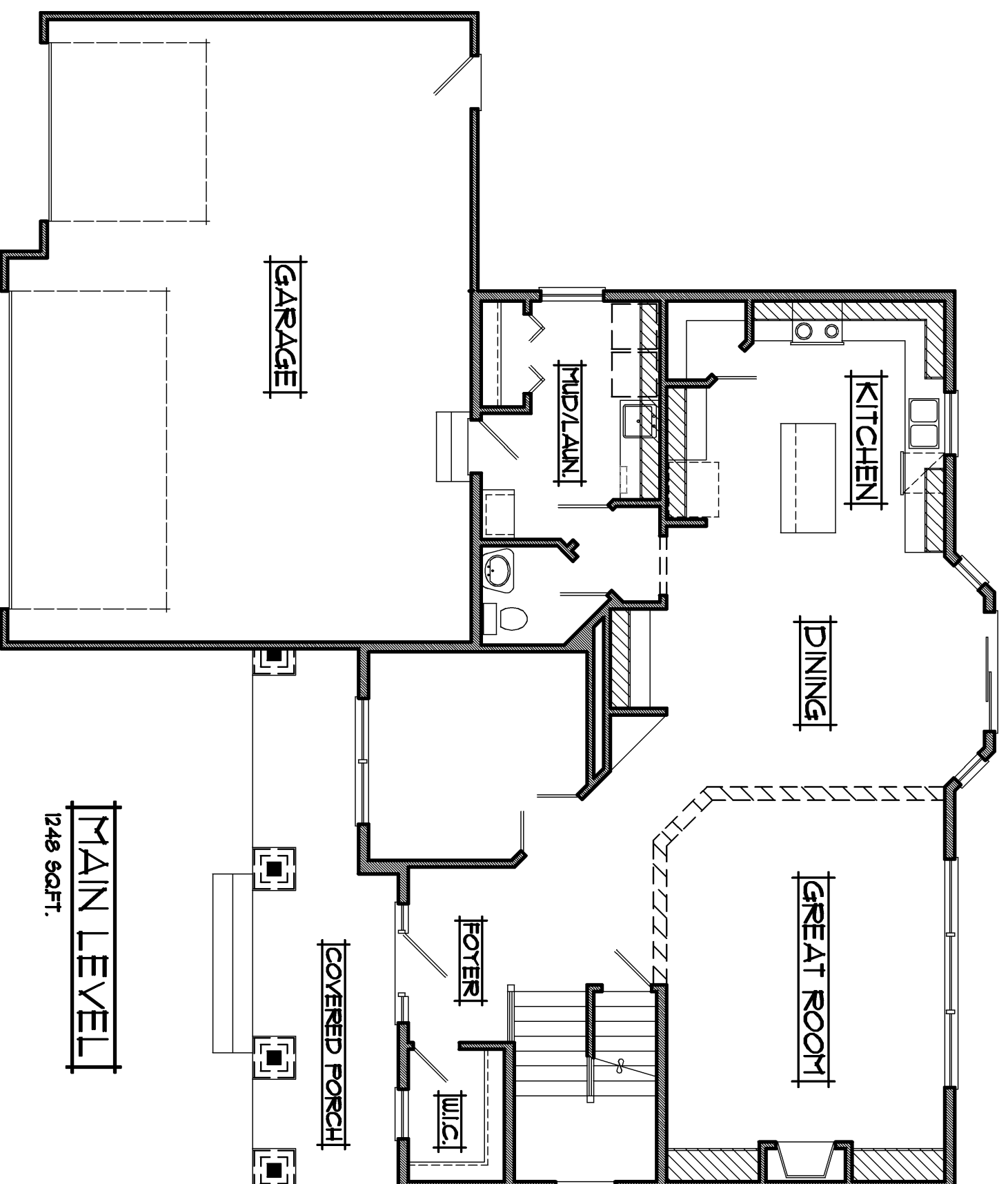


# TRACY MODEL



**UPPER LEVEL**  
1102 SQ.FT.  
153 SQ.FT. OPEN AREA/STAIRS



**MAIN LEVEL**  
1249 SQ.FT.

PROFESSIONALLY BUILT BY:

# RCBA BUILDERS INCORPORATED

• 3rd Generation Minnesota Home Builder since 1989 •

Ph: (763)323-6250 • [www.rcabuilders.net](http://www.rcabuilders.net)

MN Builder License #BC008327

**RF/MAX**

[roger.anderson@results.net](mailto:roger.anderson@results.net)

## 2350 SQ.FT. TWO STORY

- |  |  |
|--|--|
| <ul style="list-style-type: none"> <li>• 4 BEDROOMS</li> <li>• 2 1/2 BATHS</li> <li>• 3 CAR GARAGE</li> <li>• UNFINISHED BASEMENT</li> </ul> | <ul style="list-style-type: none"> <li>• WIDTH: 59'-4"</li> <li>• DEPTH: 48'-0"</li> </ul> |
|--|--|
- 
- |  |   |
|--|---|
| <ul style="list-style-type: none"> <li>• 11'10"x14'0" GREAT ROOM</li> <li>• 11'10"x16'0" DINING</li> <li>• 12'8"x14'0" KITCHEN</li> <li>• 10'6"x11'0" DEN</li> <li>• 20'0"x24'0" &amp; 12'0"x22'0" GARAGE</li> </ul> | <ul style="list-style-type: none"> <li>• 15'0"x16'10" MASTER SUITE</li> <li>• 10'6"x11'0" BEDROOM #2</li> <li>• 10'0"x11'8" BEDROOM #3</li> <li>• 10'0"x11'8" BEDROOM #4</li> </ul> |
|--|---|