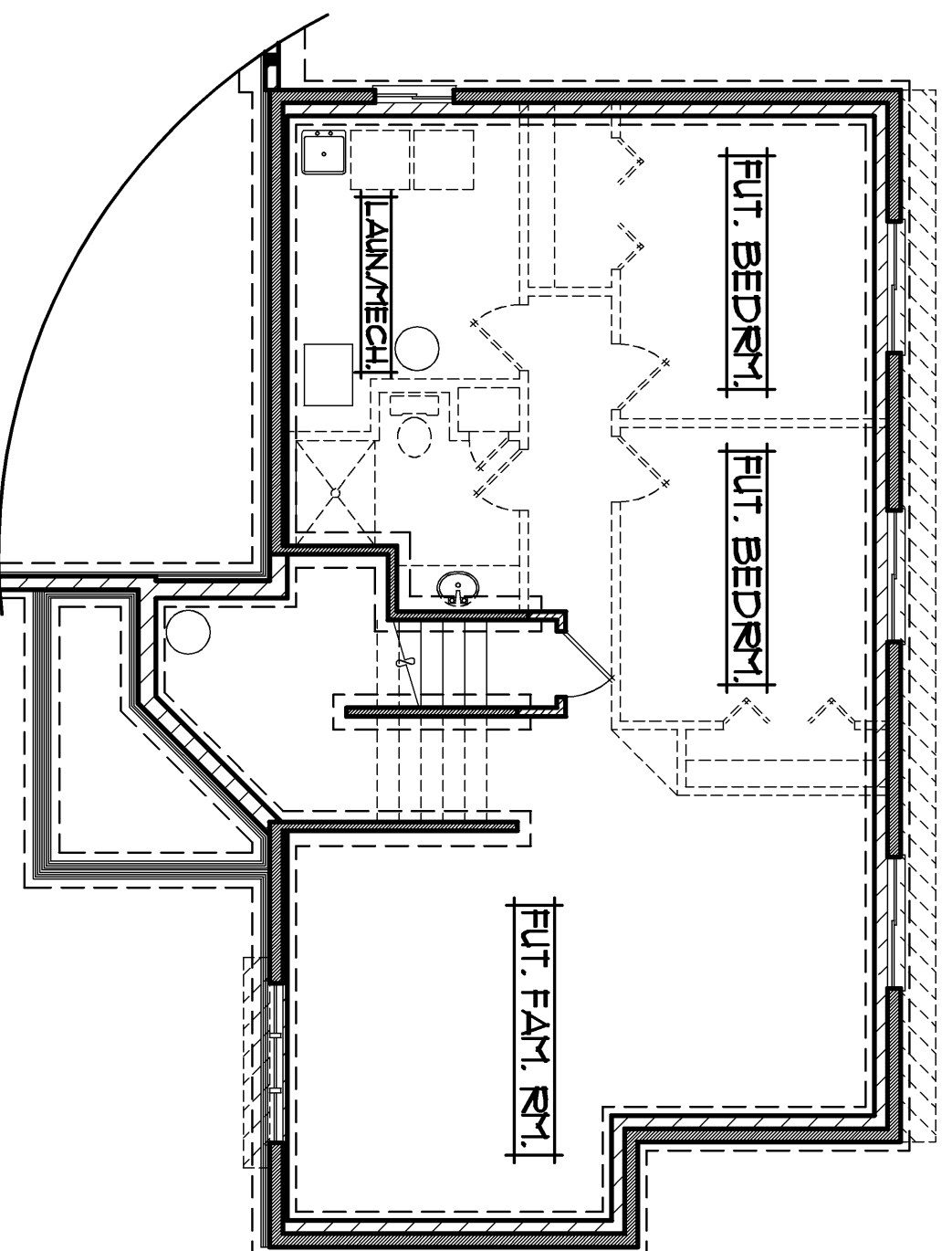
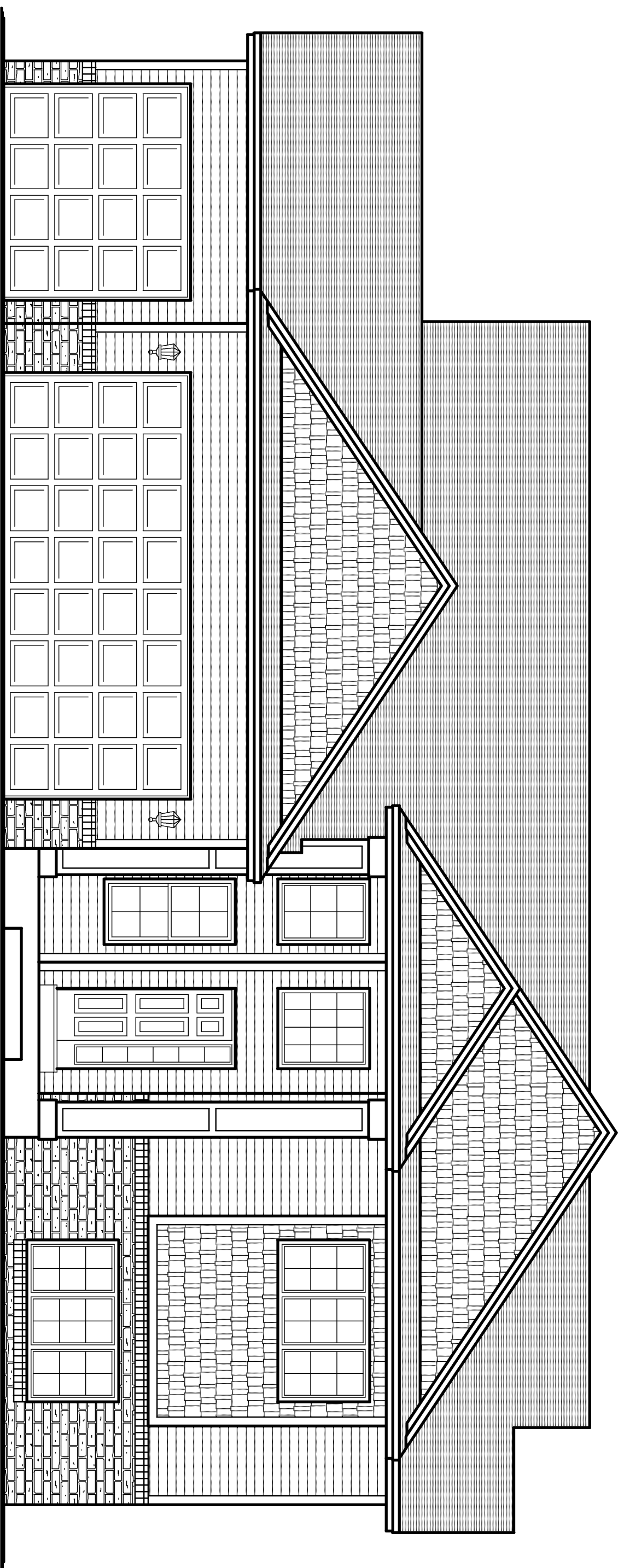
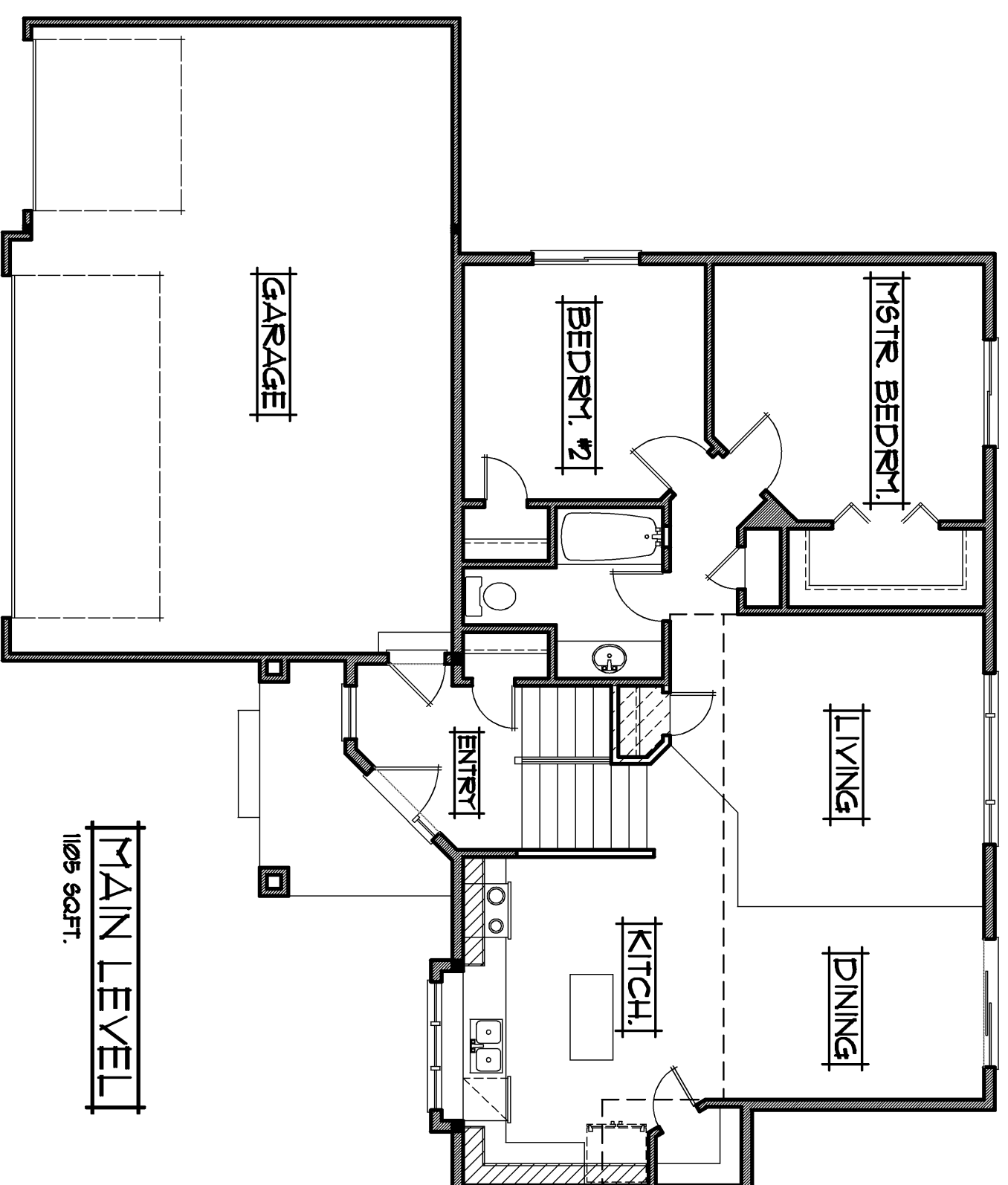


THE:
STYLIA II MODEL



LOWER LEVEL
 UNFINISHED



MAIN LEVEL
 1105 SQ.FT.

PROFESSIONALLY BUILT BY:

ROCA BUILDERS
 INCORPORATED

• 3rd Generation Minnesota Home Builder since 1989 •

Ph: (763)323-6250 • www.rcabuilders.net

MN Builder License #BC008327

RF/MAX

roger.anderson@results.net

1105 SQ.FT. SPLIT ENTRY

- | | |
|-----------------------|-----------------|
| • 2 BEDROOMS | • WIDTH: 55'-0" |
| • 1 BATH | • DEPTH: 46'-4" |
| • 3 CAR GARAGE | |
| • UNFINISHED BASEMENT | |
- 13'0"X10'4" LIVING ROOM
 - 9'10"X11'4" DINING
 - 12'4"X16'0" KITCHEN
 - 30'0"X21'0" & 20'0" GARAGE
 - 12'0"X12'8" MASTER BEDRM.
 - 11'0"X11'4" BEDROOM #2