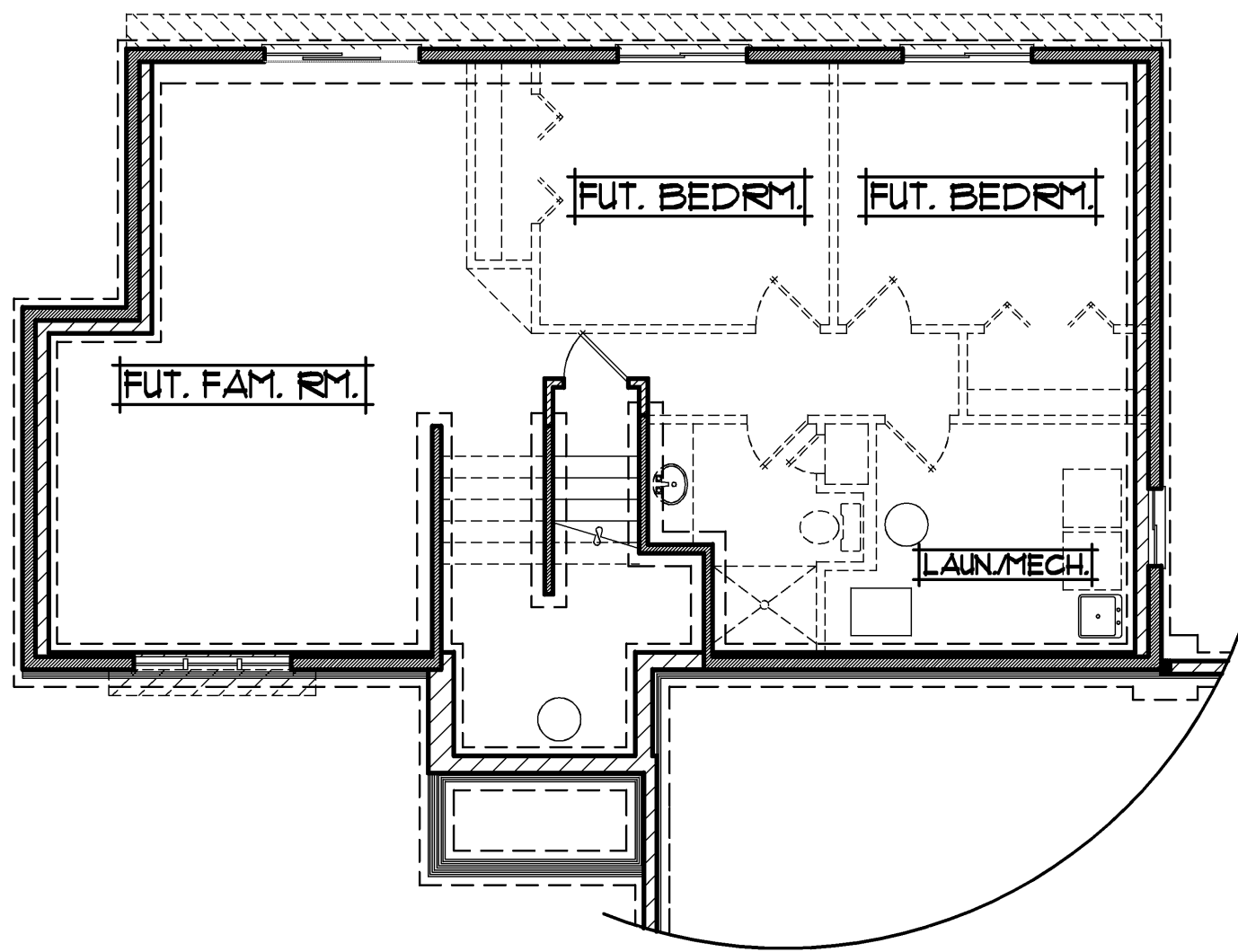
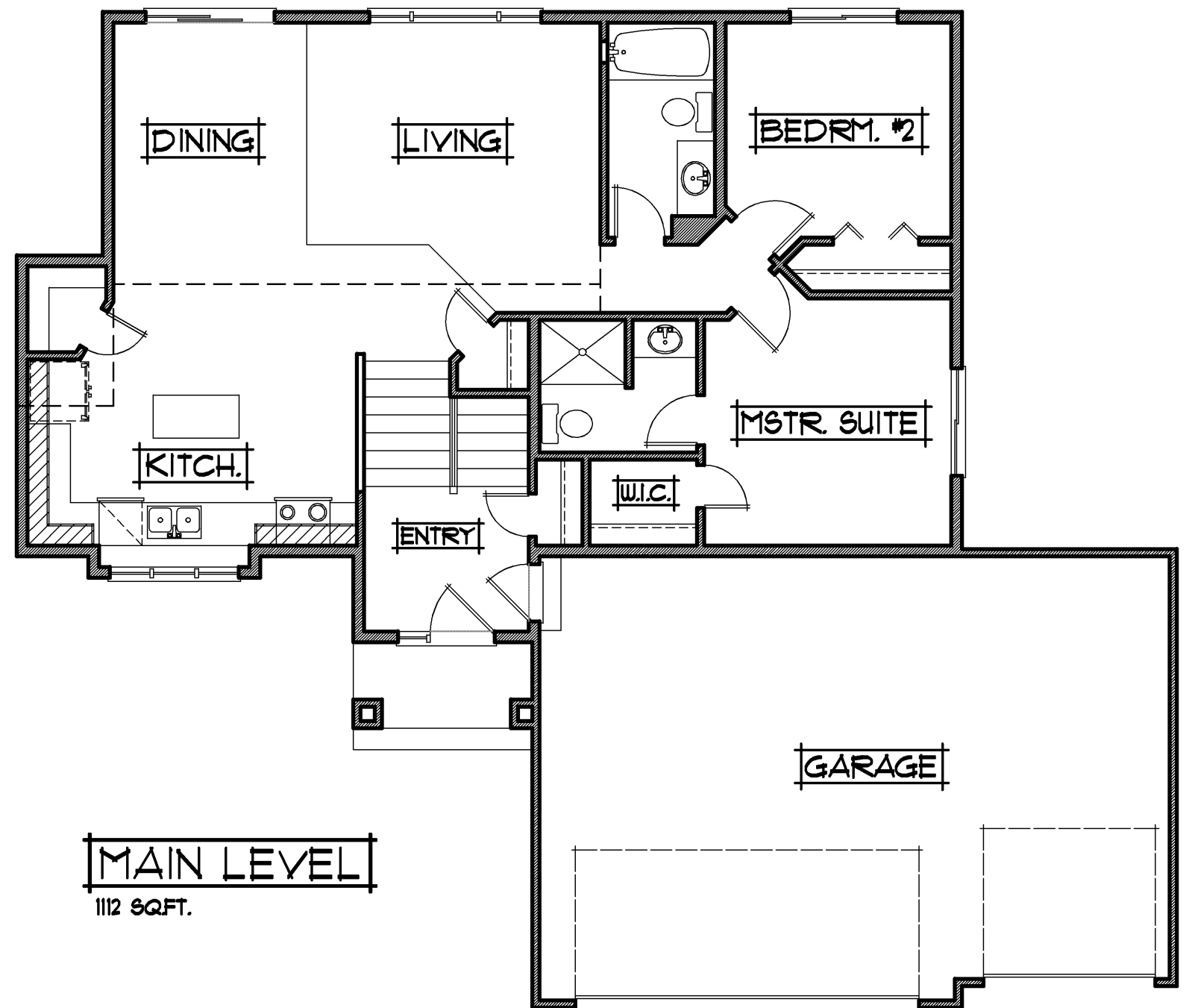


THE:
SIERRA II MODEL



LOWER LEVEL
UNFINISHED



MAIN LEVEL
1112 SQ.FT.

PROFESSIONALLY BUILT BY:

RCA BUILDERS
INCORPORATED

• 3rd Generation Minnesota Home Builder since 1989 •

Ph: (763)323-6250 • www.rcabuilders.net
MN Builder License #BC008327



roger.anderson@results.net

1112 SQ.FT. SPLIT ENTRY

- 2 BEDROOMS
- 1 3/4 BATH
- 3 CAR GARAGE
- UNFINISHED BASEMENT
- WIDTH: 54'-0"
- DEPTH: 45'-0"

- 13'8x10'4 LIVING ROOM
- 9'0x13'0 DINING
- 15'4x11'4 KITCHEN
- 11'6x11'6 MASTER SUITE
- 10'8x10'0 BEDROOM #2
- 30'0x21'0 & 20'0 GARAGE