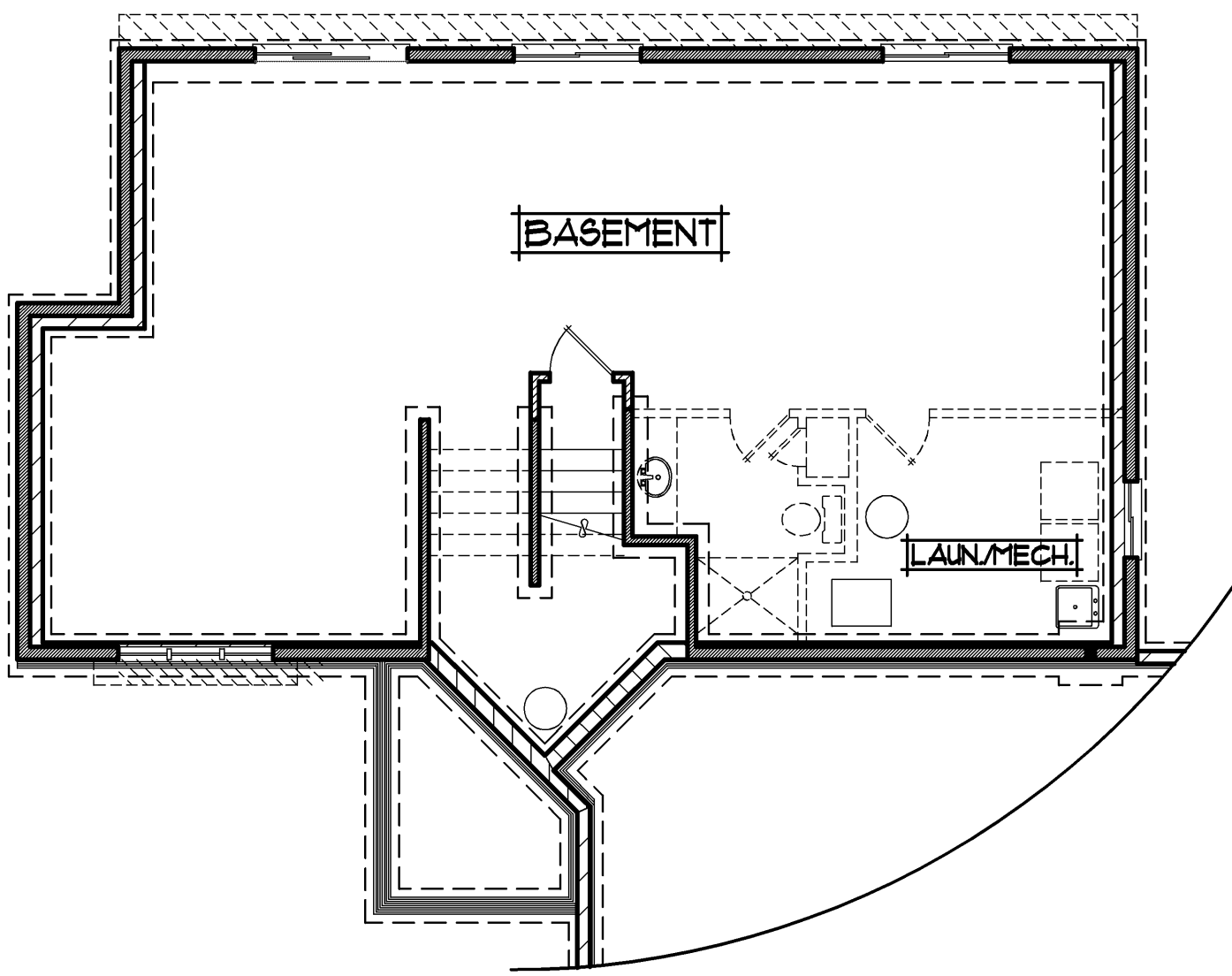
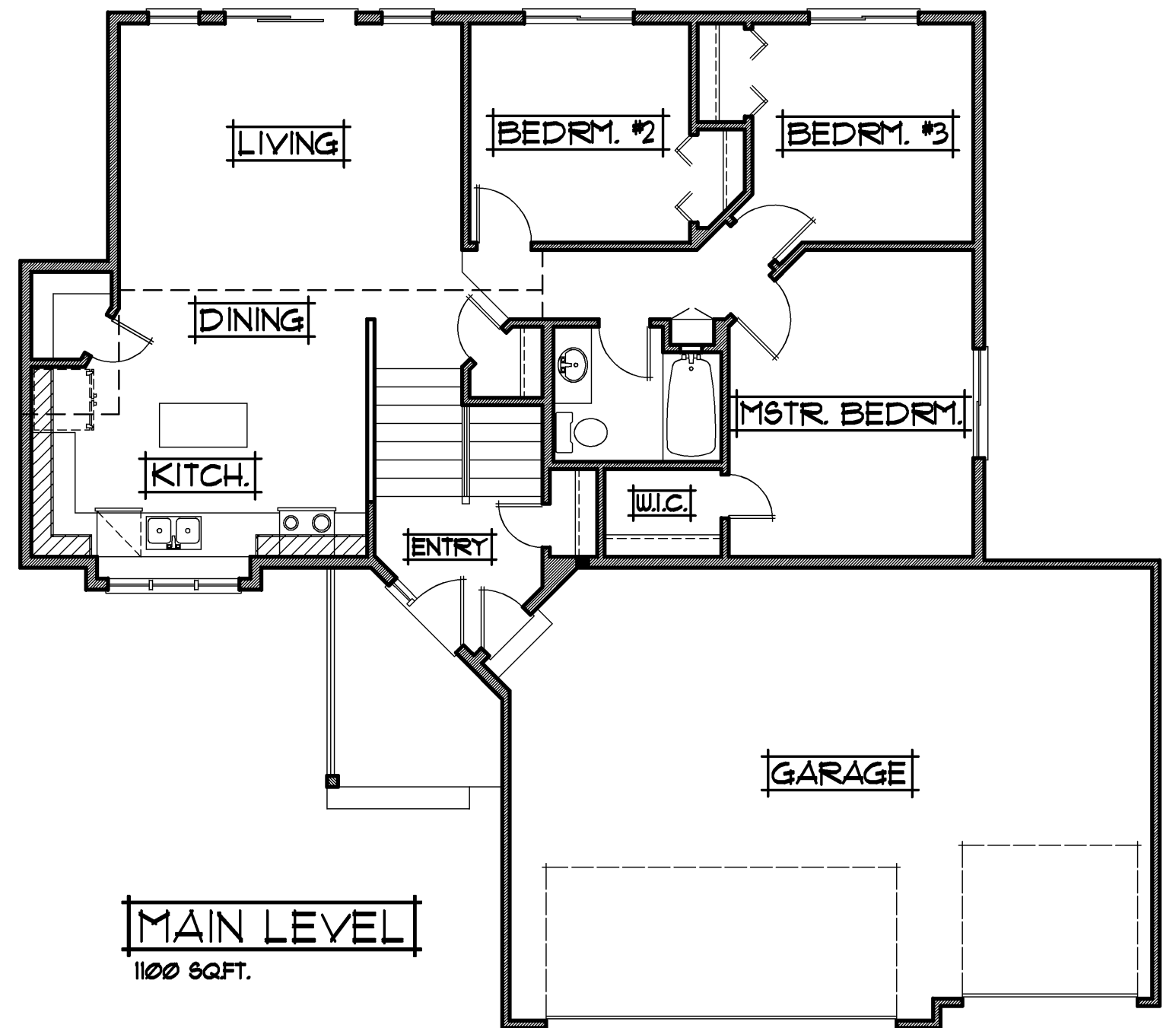


THE:  
SIERRA MODEL



**LOWER LEVEL**  
UNFINISHED



**MAIN LEVEL**  
1100 SQ.F.T.

PROFESSIONALLY BUILT BY:

**RCA BUILDERS**  
INCORPORATED

• 3rd Generation Minnesota Home Builder since 1989 •

Ph: (763)323-6250 • [www.rcabuilders.net](http://www.rcabuilders.net)  
MN Builder License #BC008327



[roger.anderson@results.net](mailto:roger.anderson@results.net)

**1100 SQ.F.T. SPLIT ENTRY**

- |                       |                 |
|-----------------------|-----------------|
| • 3 BEDROOMS          | • WIDTH: 52'-0" |
| • 1 BATH              | • DEPTH: 45'-0" |
| • 3 CAR GARAGE        |                 |
| • UNFINISHED BASEMENT |                 |
- 
- |                            |                           |
|----------------------------|---------------------------|
| • 15'8x10'4 LIVING ROOM    | • 11'2x14'0 MASTER BEDRM. |
| • 15'4x14'0 KITCHEN/DINING | • 10'1x10'0 BEDROOM #2    |
| • 30'0x21'0 & 20'0 GARAGE  | • 10'1x10'0 BEDROOM #3    |