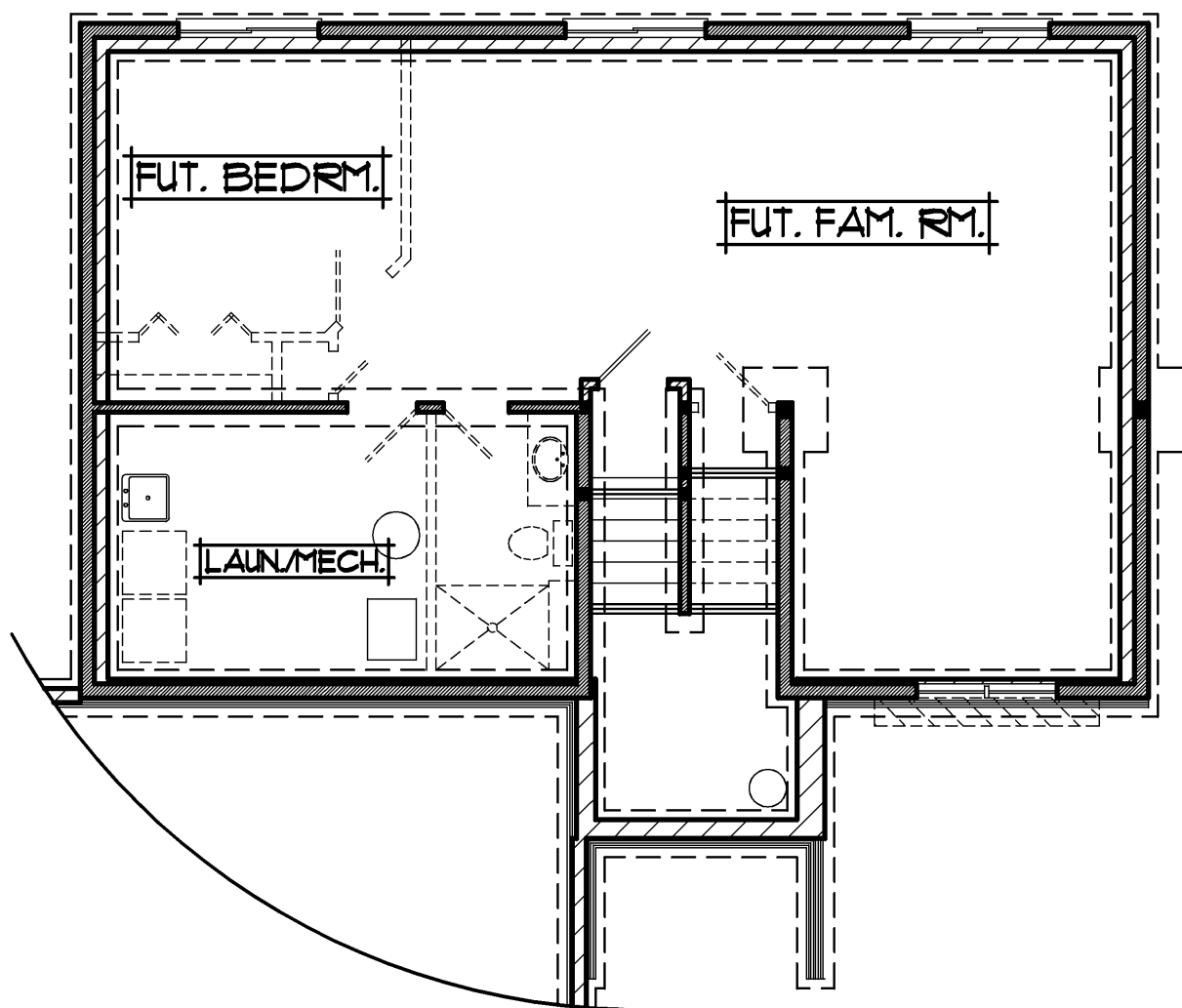
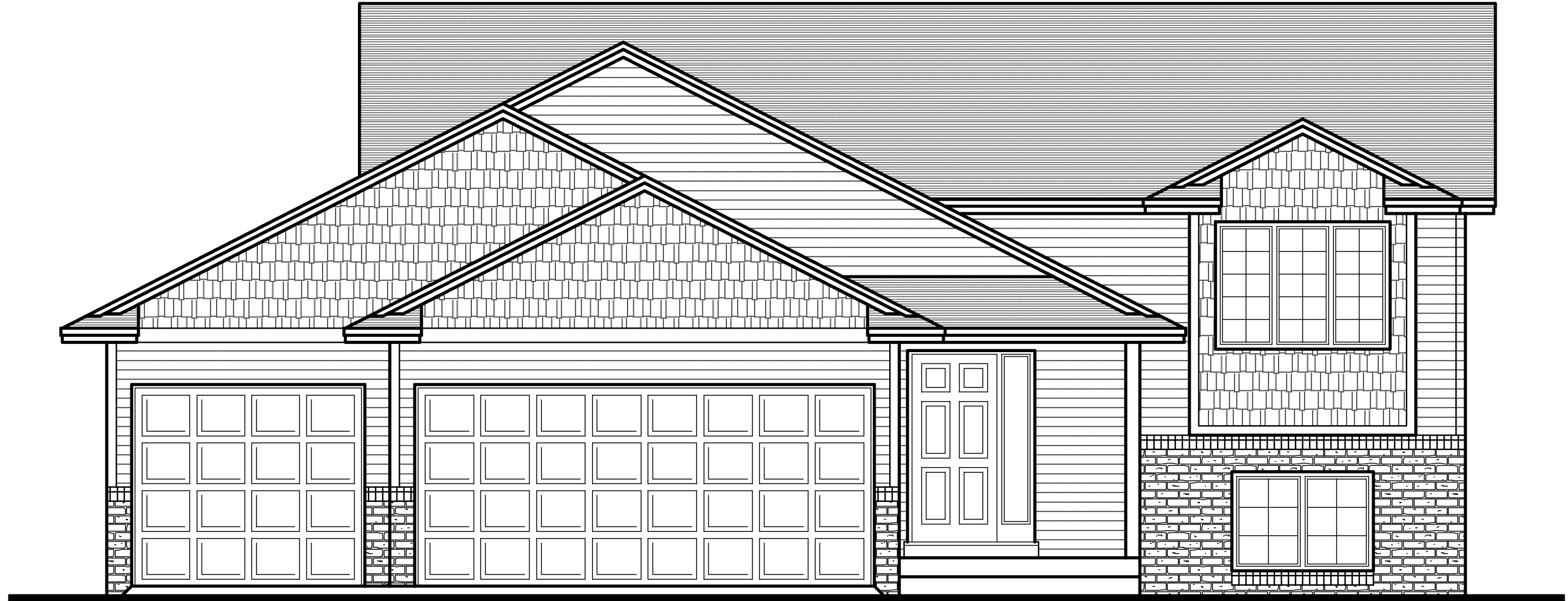
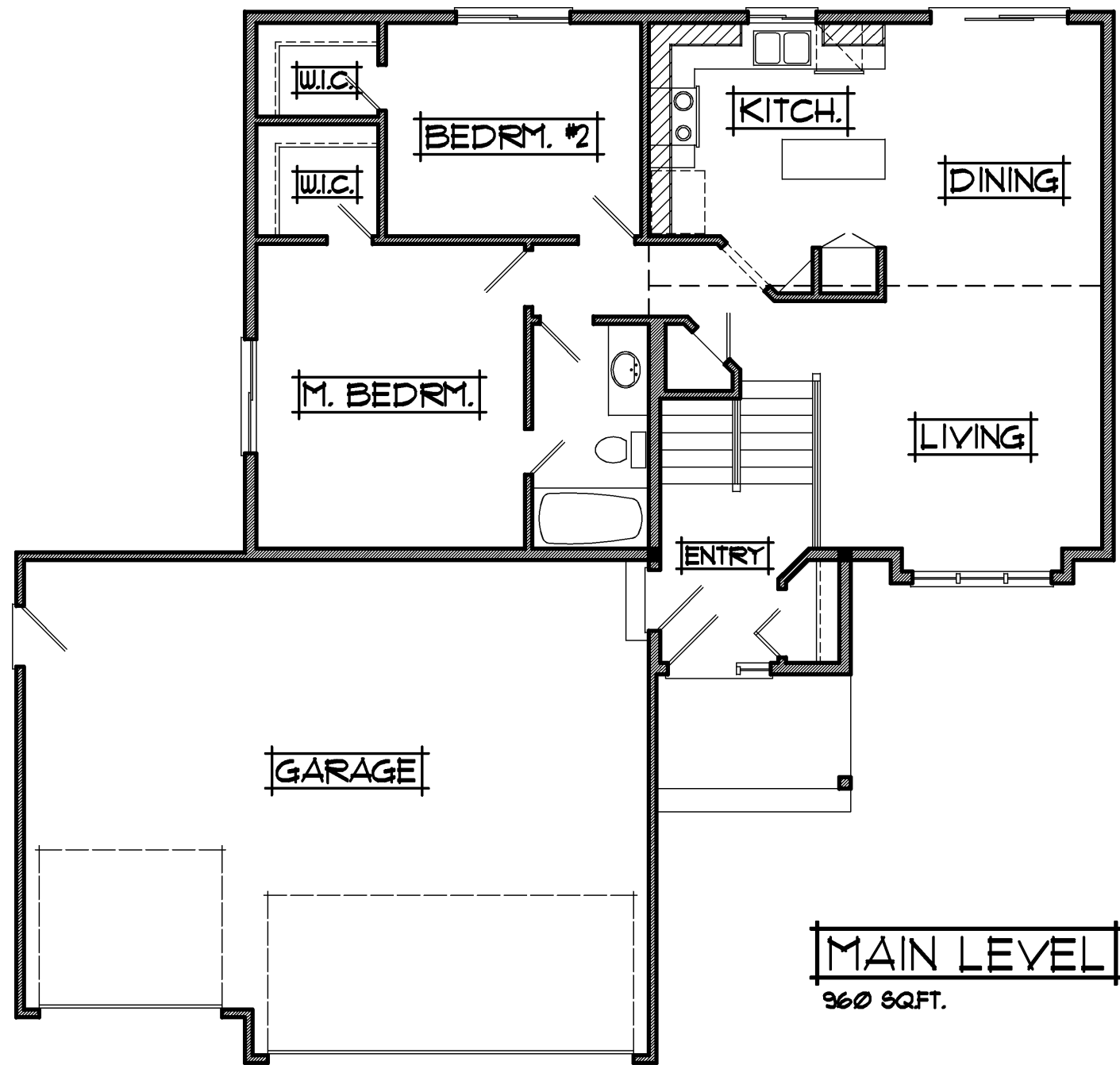


THE:  
LAREDO MODEL



LOWER LEVEL  
UNFINISHED



MAIN LEVEL  
960 SQ.FT.

PROFESSIONALLY BUILT BY:

**RCA BUILDERS**  
INCORPORATED

• 3rd Generation Minnesota Home Builder since 1989 •

Ph: (763)323-6250 • [www.rcabuilders.net](http://www.rcabuilders.net)  
MN Builder License #BC008327

**RE/MAX**

[roger.anderson@results.net](mailto:roger.anderson@results.net)

960 SQ.FT. SPLIT ENTRY

- 2 BEDROOMS
- 1 BATH
- 3 CAR GARAGE
- UNFINISHED BASEMENT
- WIDTH: 48'-0"
- DEPTH: 46'-0"

- 12'4x10'10 LIVING ROOM
- 9'6x12'2 DINING
- 10'4x9'4 KITCHEN
- 13'4x11'9 MASTER BEDRM.
- 11'2x9'4 BEDROOM #2
- 28'0x22'0 & 20'0 GARAGE